

Trail Times

www.GoldCountryTrailsCouncil.org



Official Publication of the Gold Country Trails Council

A non-profit incorporated association formed in 1981 to develop, maintain and protect non-motorized recreational trails in the Sierra Foothills area for public use and enjoyment.

Happy New Year GCTC Members!

A new year is upon us filled with hope and anticipation for continuing our mission to develop, maintain and protect non motorized recreational trails for public use and enjoyment.

The GCTC 2017 calendar lists a multitude of opportunities for you to participate and get involved. At the January meeting we will be reviewing and discussing the 2017 proposed calendar activities. Members are welcome to make suggestions and or additions.

On a personal note, 2016 was a busy year for me serving my first term as president. There was a lot to learn and I am grateful to the board and past president Karen Schwartz for their generous assistance in helping me come up to speed. I'm also grateful to those of you who showed up at the work days, volunteered at events or made a conscious choice to support GCTC even if you couldn't make it to the workday. Your contributions are all deeply appreciated.

A special thank you to those who renewed their memberships and to our newest members. Our organization is only as strong and effective as we the members make it. Your involvement in GCTC activities is important and makes a difference. The board joins me in welcoming all of you at our meetings and out on the trail.

I hope this year brings peace and happiness for all of us.

Laura Duncan
GCTC President

MEMBERSHIP RENEWING REMINDER
"renewals can be made on line with pay pal at
goldcountrytrailsCouncil.org"

If you have any questions, please contact Mary Johnson at 530-477-8501 or mjshasta@aol.com

Tuesday, January 10, 2017
at 7:00 P.M.

Nevada County Horsemen Clubhouse
10600 Bubbling Wells
Grass Valley, CA

Speaker: Dawn Humburg of American Equine Body Work.

Dawn's knowledge in acupressure, anatomy & biomechanics sets her apart from other body workers. The knowledge of equine anatomy is extremely important. Knowing where each muscle is located, what the function of that muscle is and how it is attached to each bone enables Dawn to find the source of the muscular restriction and she can show us simple things we can do to help keep our horses supple.



Robert Ribley swearing in 2017 GCTC Officers: President, Laura Duncan, Secretary, Susan Van Steenkiste, Treasurer, Teri Personeni, Board Member, Charles Green and Past President, Karen Schwartz

NEW GCTC T-SHIRTS!

We have new Ladies' V-neck short-sleeved T's, new Tank Tops and new Ladies' long-sleeved T's. And now we even have Ball Caps! And of course we also have our standard short and long-sleeved T's as well. Most of the shirts come in Hunter Green, Orange or light Gray. The Ball Cap comes in a light Hunter Green. The T-shirts were a big hit at the Thanksgiving Feast this year and we sold half of the Ball Caps already.

So if you would like to get up-to-date on your GCTC apparel, email Linda Lanzoni at Linda@MtnEquestrian.com to get color and size availability and to place an order.

- Ball Caps are \$8.00
- Standard SS T's are \$10.00
- Tanks are \$10.00
- LS T's are \$12.00



Howdy and Welcome to our newest members!!



- Chris Bugenig
- Stacey Estrada
- Margaret Hanson
- Monica & Thomas Harkins
- Cindy & Rachael Perry
- Leslie & Ron Provost
- Marc Van Zuuk

<http://www.goldcountrytrailsCouncil.org>

Leaders

- Camp Cook: Debbie Molloy
- Communications, Web Site and Social Media: Jaede Miloslavich 530 277-7765 jaede@sbbmail.com
- Forest Service Liaison: Willie Brusin
- Historian: OPEN
- Hospitality: Gail Plakos and Maryann Jorgenson
- Little Lasier Meadow: Mary Johnson
- Membership: Mary Johnson 530-477-8501 mjshasta@aol.com
- Newsletter Editor: Lynn Mangel 530-432-6979 quailhollowpv@me.com
- Poker Ride Fundraiser: Jeff Foltz 916-625-1524 JGF4oaks@yahoo.com
- Program Director: Melissa Ribley
- Publicity: Teresa Dietrich
- Sunshine: Charlotte Chapman 530-268-1145 charlottechapman2@aol.com
- Tool Storage & Maintenance: Suzanne & Barry Vaccaro
- Trail Rides: Jamie Canon
- Trail Workday Coordinator: Susan Donnelly
- United Trails Work Day: Irv Mazur

Gold Country Trails Council Officers

- President: Laura Duncan 268-1219 ldhorses@sbbmail.com
- V.P.: Melissa Ribley 268-1378 mmribley@gmail.com
- Secretary: Susan Van Steenkiste 530-263-5261 spvansteen@icloud.com
- Treasurer: Teri Personeni 273-9144 teri@terobmorgans.com
- Past President: Karen Schwartz
- Board Member: Helen McDermott 530-478-0545 sugarpine1996@sbcglobal.net
- Board Member: Fran Cole 530-272-6363 moondancewalk@sbcglobal.net
- Board Member: Charles Green 530-268-3905 cgreen4564@gmail.com

Harmony In Motion



Helen Harvey
Feldenkrais Practitioner
Centered Riding Instructor

(530) 265-4086 cell (408) 858-7852
www.heartworks.bz/harmony

Blanket Repairs R Us
 "We Wash & Repair Horse Blankets"
Vonnie Bays
 Owner / Manager
 697 Havenwood Drive
 Lincoln, Ca 95648
 (916) 645-9000
 tvbays@wavecable.com
 WEB Site: Google-Blanket Repairs R Us



Laura Berman
Homes-Ranches-Land
 Broker Associate #934015
 Grass Valley, Ca
 530-913-8789
 gvrealtor@sbcglobal.net
 TheGrassValleyRealtor.com
 United Country Real Estate-Great West




Proposed Gold Country Trails Council - 2017 Calendar

- JANUARY**
- January 10 General Meeting - 7 p.m.
 Nevada County Horsemen Clubhouse
 (NCHI), 10600 Bubbling Wells Rd.
 Grass Valley
- FEBRUARY**
- February 14 Board Meeting - 7 p.m.
 NCHI clubhouse, Grass Valley
- MARCH**
- March 11 Spenceville Ride
 March 14 General Meeting - 7 p.m.
 NCHI clubhouse, Grass Valley
 March 18 Spenceville Day Ride (rain date)
- APRIL**
- April 11 Board Meeting - 7 p.m.
 NCHI clubhouse, Grass Valley
 April 19 Lone Grave Workday
 April 22 Fundraiser Ride
 April 26 Lone Grave Workday (rain date)
- MAY**
- May 6 Cronan Ranch Day Ride
 Trail Boss: TBA
 May 9 General Meeting - 7 p.m.
 NCHI clubhouse, Grass Valley
 May 24 Work Day - Skillman
 Leader: Melissa & Robert Ribley
- JUNE**
- June 4 GCTC Annual Poker Ride Fundraiser
 Leader: TBA
 June 13 Board Meeting - 7 p.m.
 NCHI clubhouse, Grass Valley
 June 16-18 Wild West Endurance Ride
 (non GCTC event)
 June 23-25 Little Lasier Meadow Camp/Work/Ride

- JULY**
- July 8 Royal Gorge Day Ride
 Trail Boss: TBA
 July 11 General Mtg./Ice Cream Soc. - 7 p.m.
 NCHI clubhouse, Grass Valley
 July 14-16 Loney Meadow Camp/Work/Ride
 Leader: Teri Personeni
 July 16 Loney Meadow Work Day
- AUGUST**
- August 5 Western States Endurance Ride
 (Tevis) (non GCTC event)
 August 8 Board Meeting - 7 p.m.
 NCHI clubhouse, Grass Valley
 August 9-13 Nevada County Fair (non-GCTC event)
 August 23 Work Day - Upper Pioneer Trail
 Leader: TBA
- SEPTEMBER**
- September 12 General Meeting - 7 p.m.
 NCHI clubhouse, Grass Valley
 September 16 Work Day: TBA
 September 21-24 Draft Horse Classic Fair
 (non GCTC event)
- OCTOBER**
- October 10 Board Meeting - 7 p.m.
 NCHI clubhouse, Grass Valley
 October 21 Lone Grave Ride/BBQ
 Leader: TBA
 October 28 Lone Grave Ride/BBQ (rain date)
 Leader: TBA
- NOVEMBER**
- November 14 General Mtg./Thanksgiving Feast - 5:30 p.m.
 NCHI clubhouse, Grass Valley
- DECEMBER**
- December 12 Board Meeting - 7 p.m.

LEISURE EQUESTRIAN SERVICES



Cindi D. Leisure
 British Horse Society Instructor
 Centered Riding Instructor Level II
 www.leisureequestrian.com
 P.O. BOX 1567 • PENN VALLEY, CA 95946 • (925) 755-3311

Flora
TIRE AND AUTO SERVICE

Voted "Nevada County's Best" 16 times in both Tires & Auto Repair





COMPLETE AUTO REPAIR

Nevada City 531 Searls Ave 265-4642	Colfax 1774 S. Canyon Wy 346-8782	Penn Valley 17317 Penn Valley Dr 432-9144	Grass Valley 1571 East Main St 477-1414
--	--	--	--

2016 Annual Turkey Feast



Pictures provided by Bernard Molloy

YOUR MYGUY'VER
 THE 21ST CENTURY HANDY GUY
 INSTALLATION AND REPAIR SPECIALIST
FREE ESTIMATES

Computers	Security Systems
Electronics	Plumbing
Home Entertainment	Carpentry
Electrical	Painting, etc.

call Carl @ (925) 783-8234
 EMAIL: CARL@FICKLING.NET

2016 GCTC Monkey Survey Results

Thank you to the 64 GCTC members who responded to the 2016 GCTC Monkey survey. The combination multiple choice and written comments provided thoughtful direction for the committee going forward with a strategic plan for GCTC. Based on the survey results, the members are happy with GCTC.

Main items identified in the survey are:

- * Need more and better-marked trails
- * Work with the Forest Service to improve Skillman
- * Evenly split on keeping the meeting time at 7:00 pm as opposed to 6 pm
- * Less inclined to fund a port a potty at Empire Mine
- * Basically happy with the facilities at Lone Grave
- * No strong preference as to where meetings are held
- * Would like to see extra activities, speaker events at meetings or another day on a limited bases
- * Working with other groups is important to them
- * Lots of ideas on how to improve workday attendance

The Strategic planning group will be getting together in January to review the survey results and formulate a new mission statement, vision and strategic plan for the next 3 to 5 years. If you would be interested in serving on this committee please contact Jeff Foltz at jgf4oaks@yahoo.com or 530-329-3097.

RE/MAX
PERFORMANCE

Jeanette Royal
 REALTOR®, CDPE, CNE
 CalBRE #01197757
 776-B Freeman Lane
 Grass Valley, CA 95949
 Cell: (530) 755-9500
 Office: (530) 798-4880
 Toll Free: (877) 45 REMAX
 Jeanette@JeanetteRoyal.com
 www.JeanetteRoyal.com

Each Office is Independently Owned and Operated

The Gold Country Trail Council would like to recognize the following individuals for their generous donations.

Laura Berman
 Mary Abbott
 Cindi Leisure
 Carol Fuller Powell
 Cathi and Alyssa Mayo
 (West Coast Equine Sports Therapy)
 Lynn Schugren
 Sherry Warren
 Kris and Bill Van Roo

GCTC members are not always able to participate in workdays or other activities but want to contribute to the support of the important work that the Gold Country Trail Council does throughout the year. We appreciate their donations and support.

Shadowtree

877.305.6064
 www.shadowtree.com
 sales@shadowtree.com

Cal Star now AirMedCare

If you are already a Cal Star member then you probably have been made aware of the transition to the AirMedCare Network. The merger placed several emergency air flight companies together under one large team, broadening the covered area in California and other states. GCTC continues to have a group plan under AirMedCare which gives members a discount rate for the membership year. All family members are covered under the plan which is \$10.00 less than the non group rate. Currently the discounted rate is \$55.00. Whether you are riding your horse, driving your car or using another mode of transportation, if you receive emergency transport by AirMedCare, the costs are covered under their plan. For more information and to sign up go to their web site. Be sure to indicate that you are a Gold Country Trails Council member to receive the discount rate.

www.airmedcarenetwork.com

IDAHO TRAILS

Harry and I decided we would pack up our horses last summer and spend a month with them in the Wood River Valley, Idaho. We have a condo in Sun Valley and just didn't want to be without them for a whole month. So we found a place to board them just to the south in Bellevue, packed up and headed off. Not wanting to drive the entire way in one day, we spent the night in Elko, but don't recommend the Elko Fairgrounds even for one overnight. On the way back we found a ranch that takes in travelers near Winnemucca. The local fairgrounds there is also a good option. As soon as we settled in, we explored the



trails near Bellevue, and found Lees Gulch. At the most popular time of the year, we were mostly alone on the trail, but we did meet two other riders conditioning their endurance horses. We discovered that they knew Melissa and Robert Ribley, who are trying out one of their horses. Small world! We were concerned about possibly encountering too many mountain bikes on popular trails, but we were pleasantly surprised by being mostly on our own.



The real highlights were riding out Greenhorn Gulch, gaining lots of elevation, so we could see the Pioneer Mountains behind the hills on the other side of the valley and have a truly panoramic view of the whole area near Mahoney Butte. Riding along Hyndman Creek toward Big Basin was beautiful and easy until near the end where it started climbing. At higher elevation near Galena Summit, we followed the trail along Titus Creek, but never made it all the way to Titus Lake. Too much elevation gain for our horses!

The Prairie Lake trail was another favorite, with spectacular views toward the Boulder Mountains and wildflowers in August. In the Sawtooth Valley, the next valley to the north, we explored the trail to Fourth of July Lake on foot, which turned out to be an excellent horse trail where we could have gone much further to another lake, if we had our mounts with us. This is an area where you could possibly hear wolves at night if you were camping.

Our last ride was great fun trying to follow a trail that we use in the winter for cross country skiing. We discovered that there is no trail underneath the snow and the bridges we cross so easily on the snow are really just loose logs with plywood boards on top, definitely not horse-worthy. But we had a great time riding cross county, winding around through a hot spring area, and looking at the Boulders. This was just before Labor Day weekend, and there were empty campsites along the river with easy access to the road. Not the California experience. So, if you want to explore a new area about 1 1/2 days drive from here, we can definitely recommend it.

Submitted by Karen Wyeth

MULTI MILLION DOLLAR CLUB



Network Real Estate
www.KathyPapola.com

Kathy Papola
BROKER/OWNER

167 South Auburn Street
Grass Valley, CA 94945
530.271.3815 *Direct*
800.331.9888 *Toll-Free*
530.913.9879 *Cell*

Email: KathyPapola@gmail.com
DRE License #00498457





WIND HORSE SANCTUARY
Tara Coyote

Equine Facilitated Learning
Workshops & private sessions
Specializing in Grief work
Grief Rituals with Horses

530-432-9507
WindHorseSanctuary.com

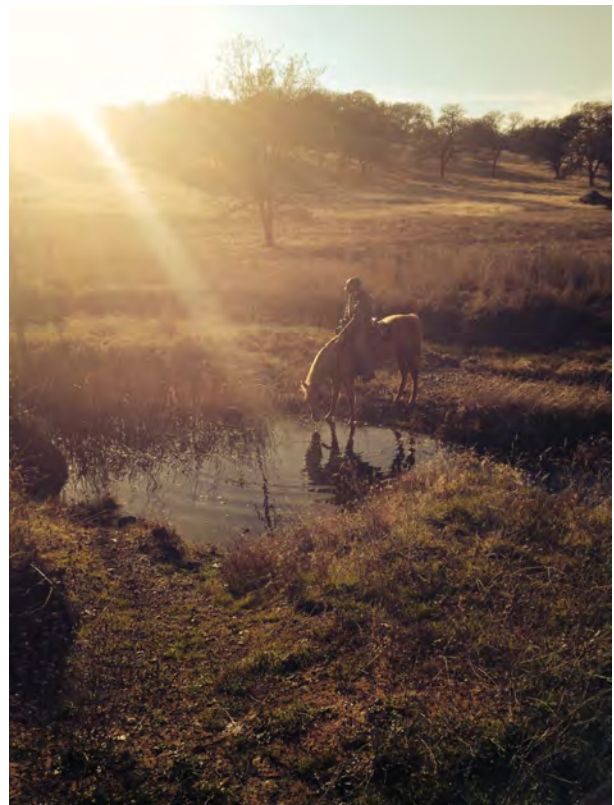
FOOTHILL FEED & GIFT

Your Complete Livestock, Pet & Gift Store

Ted Greenfield
Owner



3293 Taylor Rd. #A (916) 652-7121
Loomis, CA 95650 Fax (916) 652-2069



Gail Plakos on Roxie, Spenceville 12-2-2016

10 Tips for Taking an Annual Farm and Barn Inventory

Go to the following website for an excellent article in "Stable Management" on how to do an inventory on your farm and barn. This is something we should all consider.

http://stablemanagement.com/article/10-tips-annual-farm-barn-inventory-21657?utm_source=StableManagementNL&utm_medium=email&utm_campaign=Newsletter

Submitted by Teri Personeni



RE/MAX PERFORMANCE

Deborah Guelinas
REALTOR®

10126 Commercial Avenue
Penn Valley, CA 95946
Direct (530) 575-8461
Office (530) 432-0711
dgp@frontier.net

CalBRE# 01967884

SEDUCENTE RANCH

- * 40 lush acres located in Pilot Hill, direct access to Cronan Ranch and American River Trail! Boarding and lay-up options.
- * Trainers Welcome!
- * Stalls with turnout, semi-private pastures and field board.
- * 3 arenas and 60' round pen.

For more information contact Leslie Prevost at (phone #) or lprevost1964@gmail.com



LEAVE ONLY HOOF PRINTS

