

Trail Times



www.GoldCountryTrailsCouncil.org

Official Publication of the Gold Country Trails Council

GCTC is an organization committed to develop, maintain and advocate for safe integrated trails for equestrians and other non-motorized users.

PRESIDENT'S MESSAGE

Our first trail workday at Lone Grave was a resounding success. The trails at Lone Grave came through the winter amazingly well, considering all the snow we had. The Woods Riders are going to be out shortly to remove a couple very large trees that are down across a trail.

The next workday will be at Skillman on Wednesday, May 15. There are a lot of downed branches at the campground, but not any downed trees. We're moving the work day up a week because it looks like the weather is cooperating, and it's likely we will need another work day at Skillman for trail clearing prior to the Poker Ride. Thank you to all the trail patrol and trail adopter members who are out surveying the trails, so we can determine what trail work is needed.

Now that we've got a form on Google Drive for reporting trail issues, everyone can use it to report an issue, or take a look at the corresponding Excel spreadsheet so you can be aware of issues before you ride. If you see a problem on a trail, please remember to fill out the form so everyone is aware of the issue. Then we can ensure the problem is addressed. If you no longer have the email with the information about how to access the form, let me know and I'll re-send it to you.

We've got more signups for the Poker Ride than normal at this time. I'm sure we will need to close signups again prior to the ride. We really appreciate everyone volunteering or riding the Poker Ride. There will be emails sent with information about what food is needed, and where we need additional volunteers. Thank you very much for all your help.

I'm sure you've seen the emails asking people to attend the meetings in Placer County concerning the Hidden Falls Regional Park Expansion. There is some very organized, vocal opposition to the expansion. I'm sending emails to members who live in an area where a meeting is planned so they are aware of the meetings and can voice their support for trails and the expansion. We have talking points for members to use at the meetings, and we want to ensure there are multiple trail supporters at each meeting. Jeff Foltz will be at the May meeting with letters to mail to support the Hidden Falls Expansion.

Helen Harvey, President

Howdy and Welcome to our newest members!!

- Linda Allen
- Leslie Bussinger
- Doni DeBolt.
- Bonnie & Philip Easley
- Megan Gage
- Robin Gallowglas
- Brenda Gillarde
- Carolyn Gilmore
- Alyssa Gonzalez
- Kate Johnson
- Marilyn Mocium
- Natalie & Jess Nelson
- Kim O'Donovan
- Sandy Ruggiero
- Tamsen Taylor

**WE HOPE
TO SEE
YOU AT THE
MEETING**

**MAY GCTC GENERAL MEETING!
TUESDAY, MAY 14th, 7 PM
(Everyone's Invited!)**

**GOLDEN EMPIRE GRANGE
11363 Grange Lane, Grass Valley**

**Speaker: ERIC KENYON,
From FORM IS FUNCTION**



PHYSICAL LABOR SURVIVAL:
How to avoid injury, do more work with less effort, and make better physical decisions while building and maintaining trails or working around your property.



<http://www.goldcountrytrailsCouncil.org>


Leaders

Camp Cook: Debbie Molloy
 Communications, Web Site and Social Media:
 Jaede Miloslavich jaede@sbbmail.com
 Forest Service Liaison: Mary Johnson
mjshasta@aol.com
 GCTC Apparel Manager: Lea Zivic 530-748-9960
 Historian: OPEN
 Hospitality: Sharon Silver and Maryann Jorgenson
 530-346-7175
 Little Lasier Meadow: Mary Johnson
 Membership: Susan Donnelly 530-906-3093
susandonnelly@gmail.com
 Newsletter Editor: Pamela Warmack
cows2horses@gmail.com
 Poker Ride Fundraiser: Elicia Kamberg
 707-498-7306 ekamberg@gmail.com
 Program Director: Helen Crawford
 Publicity: Teresa Dietrich
 Refreshment Manager: OPEN
 Skillman Water Manager: Barry Vaccaro
 Skillman Campground: Elicia Kamberg
 Sunshine: Charlotte Chapman 530-268-1145
charlottechapman2@aol.com
 Tool Cache Manager: Suzanne & Barry Vaccaro
 Trail Rides: Jamie Canon
 Trail Workday Coordinator: Susan Donnelly

**Gold Country Trails
Council Officers**

President: Helen Harvey 530-265-4086
helenthharvey@icloud.com
 V.P.: Bernie Malloy 530-802-4089
imarangemaster@gmail.com
 Secretary: Cathy Chase (530) 205-0900
chasechc@gmail.com
 Treasurer: Cathy Scott 530-305-1982
ccharlie@suddenlink.net
 Past President: Laura Duncan 268-1219
ldhorses@sbbmail.com
 Board Member: Helen McDermott 530-478-0545
sugarpine1996@sbcglobal.net
 Board Member: Jamie Canon 530-265-8326
tra.jamiej@sbcglobal.net
 Board Member: Karen Hayden 530-575-5808
karenhayden@att.net

Minutes of the GCTC Board Meetings and the current 2019 GCTC Events Calendar can be accessed on the GCTC Website
www.GoldCountryTrailsCouncil.org




MAY

- 8 Wed. ~~RIDE-Cronan Ranch (CANCELED)~~
- 9-12 Horse Expo (non GCTC event)
- 14 Tue. GENERAL MEETING
- 15 Wed. Skillman Horse Camp WORK DAY
- 29 Wed. Rain Date Work Day- Skillman

JUNE

- 1 Sat. POKER RIDE
- 9 Sun. GCTC TACK SALE @ Loomis Basin Equine
- 11 Tue. Board of Directors meeting
- 13-16 Wild West Ride (non GCTC event)
- 22 Sat. Kids RIDE

LEISURE EQUESTRIAN SERVICES



Cindi D. Leisure
 British Horse Society Instructor
 Centered Riding Instructor Level II
www.leisureequestrian.com
 P.O. BOX 1567 • PENN VALLEY, CA 95946 • (925) 755-3311



Shadowtree

877.305.6064
www.shadowtree.com
sales@shadowtree.com

Exceptional items for equines, riders, best-friends, truck/barn & home!

SPENCEVILLE WILDLIFE RIDE

On March 16, we had a great ride at the Spenceville Wildlife Area. There were 5 riders, including a new member. At our lunch stop the curious cows decided to try and join us for lunch. After running them off a few times, they decided their food was indeed more tasty. After lunch we headed up to see Fairy Falls which was quite a sight, and on the way saw another set of smaller falls. On the way back we rode by Pittman Pond where we saw two beautiful white swans. The weather was perfect and everyone enjoyed the ride.

~ by Suzanne Vaccaro



GOLD COUNTRY TRAILS COUNCIL

POKER RIDE

and Fundraiser

Sat. June 1, 2019

In the beautiful Tahoe National Forest



Our 28th year!



Ride approximately 8 miles of easy to moderate well-marked trails.

Check in starts at 8:30 am

Ride out begins at 10:00 am

VERY LIMITED HORSE CAMPING, ONLY AVAILABLE ONLINE!

Get your online entry now!

GREAT PRIZES!

Huge Raffle!! Amazing Food!

OVERNIGHT camping in the famous SKILLMAN HORSE CAMP!!

Pre-entry by May 21 only \$30 includes BBQ, one poker hand, extra raffle ticket! (\$35 at ride)

Low Price only \$15 for Juniors.

Non-riders are only \$10 for BBQ with 2 raffle tickets

FOR ONLINE ENTRY FORMS and CAMPSITES:
www.GoldCountryTrailsCouncil.org

FOR MORE INFO
EMAIL RIDE MANAGER, ELICIA KAMBERG:
PokerRideGCTC@gmail.com



THE GOLD COUNTRY TRAILS COUNCIL ANNUAL POKER RIDE

benefits the building and maintenance of local trails, staging and parking areas, Skillman and Little Lasier Meadow horse camps and equestrian trail advocacy.

Event by NFS Special Use Permit; US. Dept. of Agriculture. Please feed weed and seed free hay. The Forest Service prohibits discrimination in all its programs and activities on the basis of race, color, national origin, sex, religion, age, disability, political beliefs, sexual orientation and marital or family status.



GCTC Poker Ride

June 1st  Skillman Horse Camp



REGISTER! The Gold Country Trails Council annual fundraiser is right around the corner! The Poker Ride fundraiser helps maintain and continually improve trails and our beautiful Skillman campground. Entries are available but will sell out fast. Get your entries in now! (Campsites sold out in a flash.) To enter, go to <http://www.goldcountrytrailsCouncil.org/2019-poker-ride.html>

We are looking forward to another amazing event this year and are excited to see you all there. Expect more great prizes, delicious food, goody bags for all, and a beautiful trail ride.

VOLUNTEER! Help make this event a great success. If you don't plan on riding in the Poker Ride, we welcome your help the day of the ride: parking rigs; registration; as raffle ticket sellers; at card stations; as poker hand card readers; drag riders; part of the team to help display prizes, and distribute to winners after lunch; help with food prep; cleanup crew after the event. Even if you are riding in the Poker Ride, you can still help with trail marking, and setup on Friday before the ride. If music is your gift, we invite you to share your talent during the BBQ lunch. Please contact Jeff Foltz at jgf4oaks@yahoo.com to volunteer.

DONATE! GCTC's Poker Ride is known for its scrumptious food, great prizes, silent auction and raffle prizes. This is made possible by the generous donations of GCTC members and local merchants. We welcome your new, or gently used, items that which make great silent auction or raffle prizes. Homemade crafts are always welcomed and treasured. To make a donation, please contact Laura Duncan at ldhorses@sbbmail.com. If you don't personally have an item to donate, please seek a donation from your favorite horse merchant. Most are willing to donate to a good cause (our beautiful trails), you just need to ask. Donation forms are available on the GCTC website at: http://www.goldcountrytrailsCouncil.org/uploads/5/1/0/2/51021711/gctc_donation_form_2018.pdf

SHARE THE FUN! Invite your friends, and spread the news! Print out the flyer and post it at your barn, your favorite tack and feed supply stores, the corner market. The flyer can be found at http://www.goldcountrytrailsCouncil.org/uploads/5/1/0/2/51021711/2019_poker_ride_flyer_final.pdf.

If you have any further questions, please contact our Poker Ride Manager, Elicia Kamberg at pokerRideGCTC@gmail.com.

SEE Y'ALL THERE!

LONE GRAVE TRAILS WORK DAY

After a weather delay of the first scheduled work day, the weather turned to spring with beautiful sunshine for a great turn-out of enthusiastic GCTC volunteers for trail clearing of the Lone Grave area trails on April 24, 2019. From the GCTC Equestrian Trail Head, five groups headed to different areas to cut back brush and clear downed trees. Much work was accomplished in 3 "short" hours. The triumphant crews returned to the trailhead for a delicious and hearty lunch. Several first-time volunteers were on hand to experience the fun and food GCTC work days provide.

MANY THANKS to this great group of volunteers: Suzanne Vacarro (crew leader), Cathy Scott (crew leader), Sue Brusin (crew leader), Mary Beyer (crew leader), Barry Vacarro (chainsaw), Chip Matoon (chainsaw), Jeff Foltz (chainsaw), Henriette Brun, Cathy Chase, Ginny Dix, Mary Dowling, Andrea Duncan, Laura Duncan, Tom Fletcher, Jan Geller, Brenda Gillarde, Maureen Henderson, Cheryl Herr, Nikki Julian-Vasquez, Bernie Molloy, Susan Pinskar, Leslie Schoradt, Vicki Testa, Pamela Warmack, Debbie Molloy (lunch), Barbara Hobbs, (lunch).

Please forgive me if I missed your name...and let me know if I did. mjshasta@aol.com ~Mary Johnson



Mountain Equestrian
Horse Gear & Trailer Accessories
MtnEquestrian.com Linda Lanzoni
(530) 263-6696

Join Today! You will have no out-of-pocket expenses for air medical transport by one of AirMedCare Network's 320 air ambulance bases in 38 US states, including your local providers CALSTAR & REACH. Protect your finances and support your local bases by enrolling today. Membership covers your entire household for a year from enrollment.

Sonja Conklin, Membership Manager, 530-648-6455
www.airmedcarenetwork.com/msm/sonja-conklin
Enter Discount Code: 11109-CA-BUS



GCTC TACK SALE



June 9 is the date for **Pines to Mines Tack Sale** fundraiser. The event will again be held at **Loomis Basin Equine Medical Center**. This year the tack sale will be held in conjunction with **LBEMC 7th annual Equine Health Fair**. There will be presentations throughout the day. In addition, Saddles that Fit! owners Susan and David will again be there. They are very informative and entertaining. You are invited to come with any questions you have about Equine health, performance, or saddle fit. LBEMC will also be unveiling their new facilities expansion, as construction is now complete and they're ready for expanded equine business.

Free admission to both events. A **complimentary BBQ** is generously hosted by LBEMC for all attendees.

Your support is important. If you have surplus tack (who of us doesn't?!), rent a space. If you have items you'd like to donate for GCTC to sell, let us know. And if you have time, we'd sincerely appreciate your help setting up the tack sale.

Then, just come to **shop, learn, enjoy, and have a great time!**

Please contact Laura Duncan if you have questions or need more information: m2ptacksale@gmail.com



GOLD COUNTRY TRAILS COUNCIL BENEFIT TACK SALE

(Funds the Pines to Mines Trail)



Loomis Basin Equine HEALTH FAIR

MEDICAL CENTER

★ **TWO BIG EVENTS** ★
ONE DAY - ONE LOCATION!
 Sunday • June 9, 2019
 BIG COVERED ARENA at LBEMC
 RAIN OR SHINE!
 ★ **NO ADMISSION FEE!** ★
 ACTIVITIES ALL DAY! FREE BURGERS, FREE FOOD!!

Loomis Basin Equine Medical Center
 2973 Penryn Road Penryn, CA 95663

Tack Sale Information

Individuals, horse organizations, nonprofits and commercial vendors welcome!
 \$25 individual booth • \$35 commercial booth (contiguous spaces available)

Load in easier and faster this year and optional set up night before!

Facebook Event Page: www.facebook.com/events/560193067771225/

Questions: Laura m2ptacksale@gmail.com

*****ONLINE REGISTRATION FOR VENDORS*****

www.goldcountrytrailsCouncil.org/2019-tack-sale.html

GOLD COUNTRY TRAILS COUNCIL
www.GoldCountryTrailsCouncil.org



Kathy Becker Petsitting
Domestics to Exotics



~Experience
~References
~Reasonable Rates

fkf@att.net
530-263-4423 cell
530-268-6962 home



Dawa Fitzmaurice
(530) 470-3378

Blissful EQUINE
Holistic Therapy for Horses

blissfulequine.com
Nevada City, CA 95959




WILD WEST ENDURANCE RIDE



The annual Wild West Endurance Ride is coming up soon, June 13-16, 2019, and it's a four-day event this year. GCTC member Elicia Kamberg is the Ride Manager, and also our GCTC Poker Ride Manager. She needs your help as volunteers to make the ride a success! Volunteers receive a tee shirt and lunch along with great camaraderie. There are multiple types of jobs: volunteers can take pulses, scribe for a vet, be an in-timer or out-timer, spotter and more. One doesn't have to stay all day, just a morning or afternoon time commitment would be awesome. Come for one day or multiple days, they are grateful for any time you can spare. To volunteer please contact Ride Manager Elicia at: WildWestEndurance@gmail.com, or 707-498-7306. If you have volunteered in the past and haven't received a message from her, please send her an e-mail, text or call. Every volunteer is important and sincerely appreciated!

If you're interested in riding the ride or have thought about trying endurance, this is a great opportunity to start. Please note, entries must be made by June 10th. Sunday's 25-mile ride starts at 9 am, so it works well for locals who want to haul in for the day. It's a good new rider ride and goes out to beautiful Bear Valley. Check out the website for more information and an entry form at: <http://www.wildwestendurance.com/wild-west-ride/>




Duke's TRAILER WORKS



(530) 277-2028
Repairs Restoration Mobile

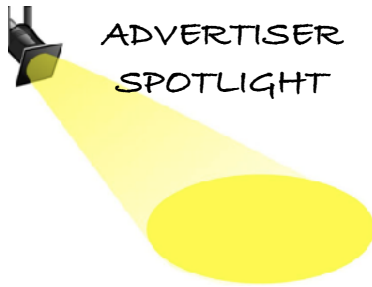
ALL ABOUT WELLS

Evelyn Soltero, MS
Geoscientist

530-210-9508
invitewatertostay.com

residentialwells@gmail.com





Dan & Sue Seidlitz
 Sierra View Ranch General Store, LLC
 10556 Combie Road #6443
 Auburn, CA 95602

805.231.5305 • 805.816.8759
 sierraviewranch@hotmail.com

iceproducts.net

Since 2015, **I.C.E. Products USA** has been manufacturing high-visibility identification gear for equines and canines. Our motto is **"Be Prepared - Be Reunited."**

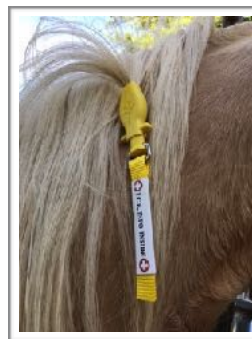
The extreme weather events and devastating wildfires in the last few years have really demonstrated the need to have identification on our beloved animals. Our key focus is to provide methods to assist in the safe and quick return of an animal to his family, and a way for first responders to contact an equestrian's family in the case of a trail mishap where horse and rider are separated.

Products include ManeStay, I.C.E. Clip-on, I.C.E. UltraLite, I.C.E. Halter, I.C.E. Collar ID for dogs, and embroidered/personalized lead ropes. About 3,000 ManeStays have been put to use in wildfire and hurricane situations since 2016 with fabulous results. Many evacuation teams are now using ManeStay in their training sessions.

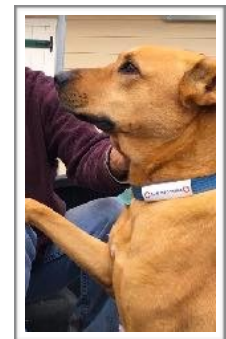
As we all know, it's possible to become separated from your horse on the trail, too. The I.C.E. Clip-on's scissor snap makes it easy to keep your emergency contact details on your horse's saddle or breast collar so you or he can get needed assistance.

Coming very soon is StallBlaster, a liquid concentrate that uses naturally occurring microbes that biodegrade odor molecules. StallBlaster drastically reduces or removes unhealthy--and dangerous--ammonia odors from indoor and outdoor stalls, livestock pens, chicken coops, litter boxes, etc. After six months of thorough testing, it will be available mid-May!

Visit iceproducts.net for more details. GCTC member Linda Lanzoni's *Mountain Equestrian* business has been an I.C.E. Products dealer since 2016.



Mane Stay



Collar ID



I.C.E. Clip-on



I.C.E. UltraLite



LEAVE ONLY HOOF PRINTS



PARADE TIME!

GCTC will once again march in the **Penn Valley Rodeo Parade**, and the 4th of July Parade, this year in Grass Valley. It's a truly fun and rewarding experience to take our horses through town, waving to the crowds cheering us on and representing GCTC in the best, most exciting way.

First up is the Penn Valley Rodeo Parade on **May 18th** in Penn Valley, which begins at 3 PM. We currently have 8 riders and two walkers to carry the GCTC banner. We would love to have more of you join us. If you've ever thought about riding or walking in a parade, this is the best one to start with.

We stage on the lawn at Western Gateway Park. There is minimal wait time in line and we march for one mile on a straight, level road from the park to the Rodeo Fairgrounds. We ride back to the park after the parade ends. Please email Linda Lanzoni @ Linda@MtnEquestrian.com if you'd love to join us!



Penn Valley Rodeo Parade!



Harmony In Motion



Helen Harvey
Feldenkrais Practitioner
Centered Riding Instructor
(530) 265-4086 cell (408) 858-7852
www.heartworks.bz/harmony

Residential • Horse & Ranch Properties

Serving Nevada County and surrounding communities



www.homesforheroes.com

Sue Bartow
REALTOR®

CABRE: 02037097
530-205-3338
559-972-2713

sua@balloucompany.com
www.balloucompany.com



REAL ESTATE SERVICES



LITTLE LAISER MEADOW WORK DAY AND CAMP EVENT JULY 19-21, 2019

The wonderful snow pack in the mountains has delayed the annual camping outing this year from the end of June to the middle of July. The work day is Saturday,

July 20 from 9:00 to 12:00. The rest of the time is for riding and relaxing. There will be a pot luck dinner on Saturday night.

The Forest Service reserves the camp for us in exchange for the work we do, and there is no cost for members to camp Friday and Saturday nights. Several members do start the camp out earlier in the week. Those extra days are at your own cost.

The usual types of things we do are: 1) clean up the camp, (clean fire pits, pick up fallen branches, trim back low branches, repair erosion in camp sites, repair the corrals, clean and sometimes paint picnic tables, etc.); 2) trim brush away from trails, cut trees, repair trail bed issues; 3) mark and clear new trails.

The camp ground has 11 sites. Site 10 is used by the campground host. The sites are well spaced with trees that provide privacy. There are 10 sets of corrals (one group of 4 corrals together, two sets of 2 corrals together, and 2 single corrals) in the camp in various places, not necessarily attached to a particular camp site. There are many places to high line your horse or set up portable corrals. Many sites are pull through and reasonably flat. A couple of sites are better for tent camping and don't accommodate a large trailer well. There are two vault toilets, but no showers. The available water is from a hand pump (well) and it is not labeled as potable. The camp is located by a meadow and a stream which basically goes underground in the summer, but there are pools along the stream bed. Mosquitoes and other insects are present.

The trails in the area are a mixture of logging roads, gravel roads, single track trails, and the Pacific Crest Trail. Footing is a mix of soft dirt and rocks. Some trails are quite rocky in places. A couple of the trails involve crossing a creek.

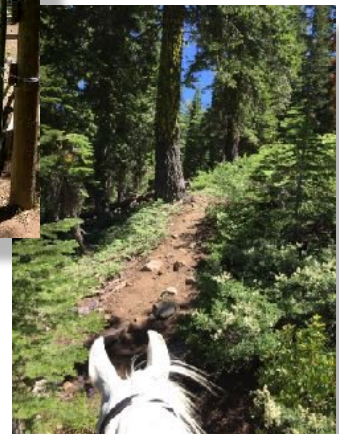
The roads to reach Jackson Meadow Res. are paved. The road to reach the camp is 1-1/2 miles

of gravel with mostly single lane travel, some spots wide enough for 2 lane travel. It usually is in pretty good shape, but this winter might have been hard on it. I always go up to check things out about 2 weeks before the scheduled date and will know the condition of the road at that time as well as what type of work we will be performing.

Since this is a popular GCTC event we do have to double-up in several of the larger campsites for the weekend. I try to accommodate everyone comfortably by knowing what type and size their rigs are and how they need to contain their horse, then "assign" sites according to campers needs. So, there are a few things I need to know about you in order to coordinate the event.

- When you will arrive and leave.
- How you camp: tent, camper on your truck, sleep in your trailer.
- Size of your rig. truck & trailer (pull or gooseneck, LQ, length or how many horses does it hold).
- How many people and horses you are bringing.
- How do you accommodate your horse: high line, solid portable corral, electric fence corral, tie to trailer, need a camp corral. It is best to have a back-up plan as there are not enough camp corrals for everyone.

TO SIGN UP FOR THIS CAMPING/WORK DAY EVENT OR IF YOU HAVE QUESTIONS CONTACT: MARY JOHNSON @ mjshasta@aol.com or 530-477-8501





Laura Berman
 Broker Associate BRE#934015
Homes-Ranches-Land
 226 Mill Street
 Grass Valley, Ca
 530-913-8789
 Laura@gvRealEstate.com
 www.gvRealEstate.com
 United Country - California Properties #1919565



HORSE CAMPING DEMONSTRATION & WORKSHOP



Our very own GCTC horse camping guru, Mary Johnson, hosted a horse camping demo and workshop at her ranch on April 28. Experienced horse campers shared their expertise and their rigs at this interactive get-together and everyone learned tricks from one another.

Information included:

- accommodations for the human
- camp kitchen
- personal gear
- accommodations for the horse
- feed and how to carry it
- horse first aid kit
- horse gear
- hands-on practice putting up a high line
- finding a camp ground and much more!

The official greeter! →



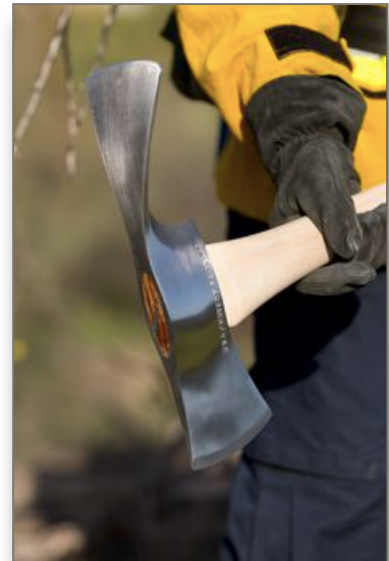
Many thanks to all who made this informative day possible.



THE PULASKI TOOL from Teri Personeni

Our trail work days have begun and some may have an opportunity to use this amazing tool.

First, an historical introduction to the name "Pulaski." Casimir Pulaski, a Polish count, is honored as the founder of the American Cavalry. During the Revolutionary War he played a pivotal role at Valley Forge. When George Washington found himself outmaneuvered, he sent for Nathanael Greene for reinforcements. But, in the meanwhile, Pulaski managed to put together a half-decent cavalry of farmers who didn't even speak French (Pulaski's language at the time). Exposed to enemy fire, they protected Washington in his hasty retreat. Were it not for Pulaski and his men, Washington would have been slain, or captured and then hanged. Later in the war, Pulaski was mortally wounded by a shot to the head. He never regained consciousness. The British commander Prevost gave the cavalrymen safe-conduct to bear their fallen leader from the field, such was the esteem for the courage and nobility of this Polish count.



The invention of the tool we use on the trails:

Ed Pulaski, an assistant ranger with the U.S. Forest Service is credited with inventing the tool in 1911 - and saving the lives of 45 firefighters in the conflagration that started along the Idaho-Montana border on August 20, 1910 which consumed an area of almost 3 million acres. The Pulaski was created as a special hand tool for wildland firefighting. The tool combines an axe and an adze in one head, similar to that of the cutter mattock, with a rigid handle of wood, plastic, or fiberglass. It is a versatile tool for constructing firebreaks, as it can be used to both dig soil and chop wood. In addition, today, it is used for trail construction, gardening, and is effective for digging in root-bound or hard soils.



For more information about Ed Pulaski, and the tool he invented, you can check out his story, and his influence on firefighting one of the most devastating fires in our history, in Timothy Egan's book, *The Big Burn: Teddy Roosevelt & the Fire that Saved America*. Boston: Houghton Mifflin.

BE LIKE ED PULASKI...



Members are Invited to Advertise their Business in the GCTC Newsletter & Phonebook

Place your business card size advertisement in the GCTC publications for just \$5 per issue, or \$25 for the entire calendar year (6 issues).

The Newsletter is distributed to all GCTC members, affiliate members, and appears on the GCTC website.

To place your ad contact GCTC Newsletter Editor:

Pamela Warmack cows2horses@gmail.com